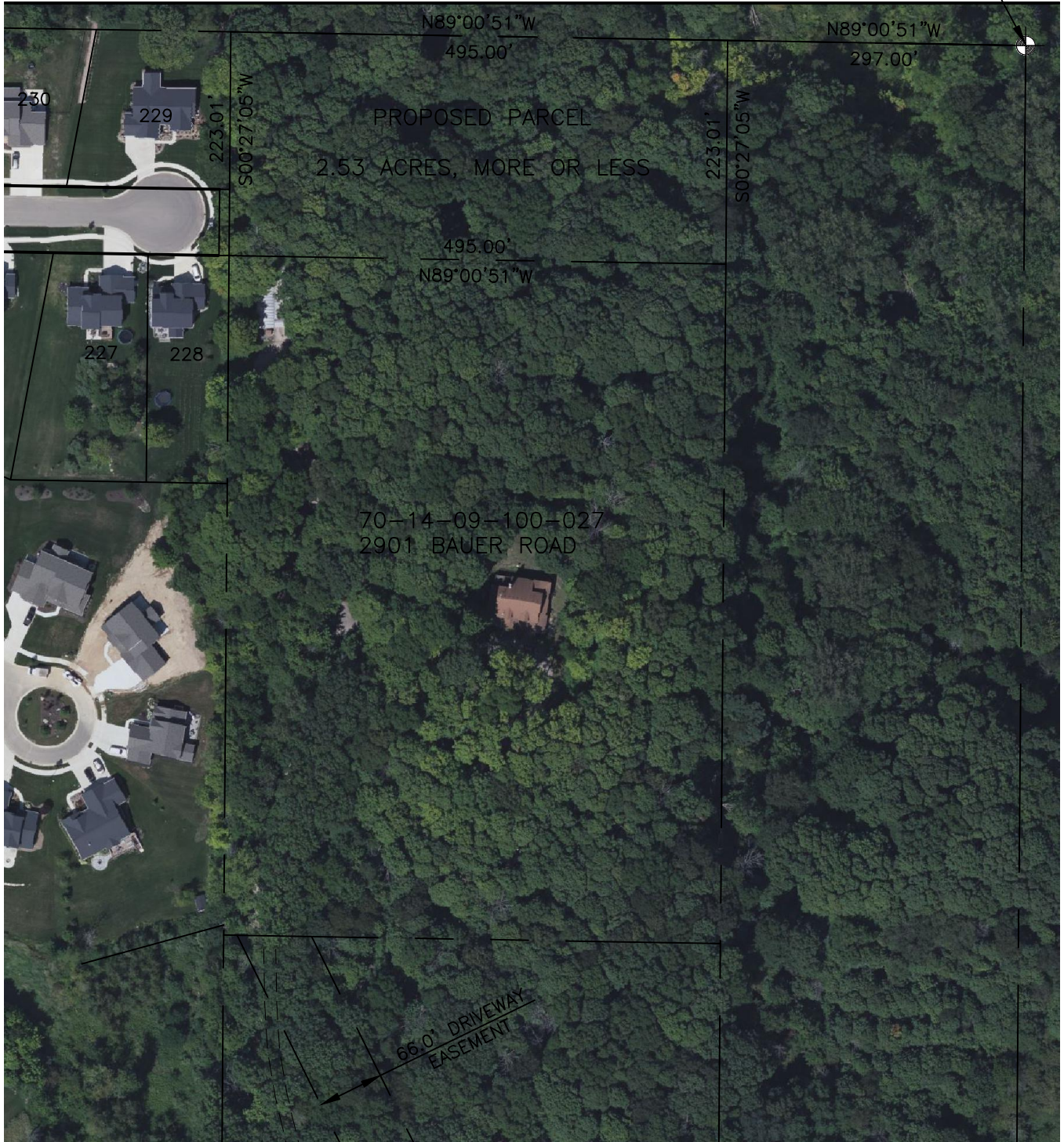


# PROPOSED PROPERTY EXHIBIT

PART OF NORTHWEST 1/4 OF SECTION 9,  
TOWN 6 NORTH, RANGE 13 WEST,  
GEORGETOWN TOWNSHIP, OTTAWA COUNTY, MICHIGAN

NORTH 1/4 CORNER, SECTION 9,  
T6N, R13W, GEORGETOWN TOWNSHIP,  
OTTAWA COUNTY, MICHIGAN



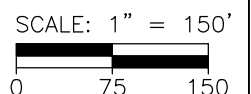
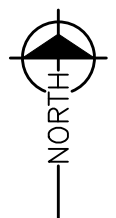
**PARENT PARCEL DESCRIPTION:**

PART OF E 1/2 OF NW 1/4 COM 297 FT W FROM N 1/4 COR, TH S 900 FT, W 495 FT, N 900 FT, E 495 FT TO BEG SEC 9 T6N R13W 10.23 A

**PROPOSED PARCEL DESCRIPTION:**

PART OF E 1/2 OF NW 1/4 COM 297 FT W FROM N 1/4 COR, TH S 223.01 FT, W 495 FT, N 223.01 FT, E 495 FT TO BEG SEC 9 T6N R13W 2.53 A

BASIS OF BEARING: NORTH LINE, SECTION 9, TOWN 6 NORTH, RANGE 13 WEST, GEORGETOWN TOWNSHIP, PER OTTAWA COUNTY REMONUMENTATION RECORDS.



<p>TIMOTHY A. PLATZ PROFESSIONAL SURVEYOR #4001052479</p>	<p><b>Part of NW 1/4, Section 9, T6N, R13W, Georgetown Township, Ottawa County, Michigan</b></p>	<p>04/13/2022</p>
<p>616.889.7125</p>	<p><b>Proposed Property Exhibit</b></p>	