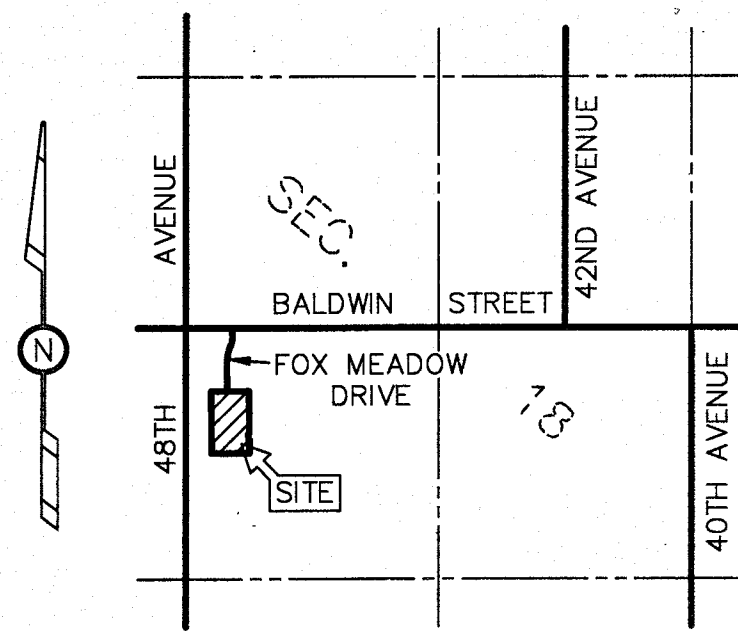


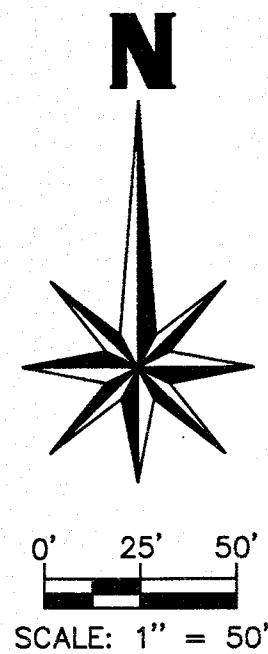
# CROSSWINDS NO. 2

PART OF THE SW FRACTIONAL 1/4, SECTION 18, T6N, R13W,  
GEORGETOWN TOWNSHIP, OTTAWA COUNTY, MICHIGAN

SHEET 1 OF 2

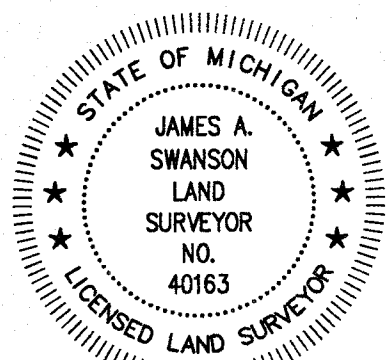


LOCATION MAP  
SCALE: 1" = 2000'



THIS PLAT IS SUBJECT TO RESTRICTIONS AS REQUIRED BY ACT 288 OF 1967, AS AMENDED ON CERTAIN LOTS WITH RESPECT TO THE REQUIREMENTS OF THE OTTAWA COUNTY DEPARTMENT OF PUBLIC HEALTH, THE OTTAWA COUNTY WATER RESOURCES COMMISSIONER AND GEORGETOWN TOWNSHIP WHICH ARE RECORDED IN DOCUMENT NUMBER \_\_\_\_\_ OF RECORDS OF THIS COUNTY.

CURVE TABLE				
CURVE NO.	CENTRAL ANGLE	RADIUS	LENGTH	BEARING & CHORD
1	90°00'00"	17.00'	26.70'	N44°52'05"W 24.04'
2	90°00'00"	83.00'	130.38'	N44°52'05"W 117.38'



*James A. Swanson*

**CERTIFIED  
TRUE COPY**

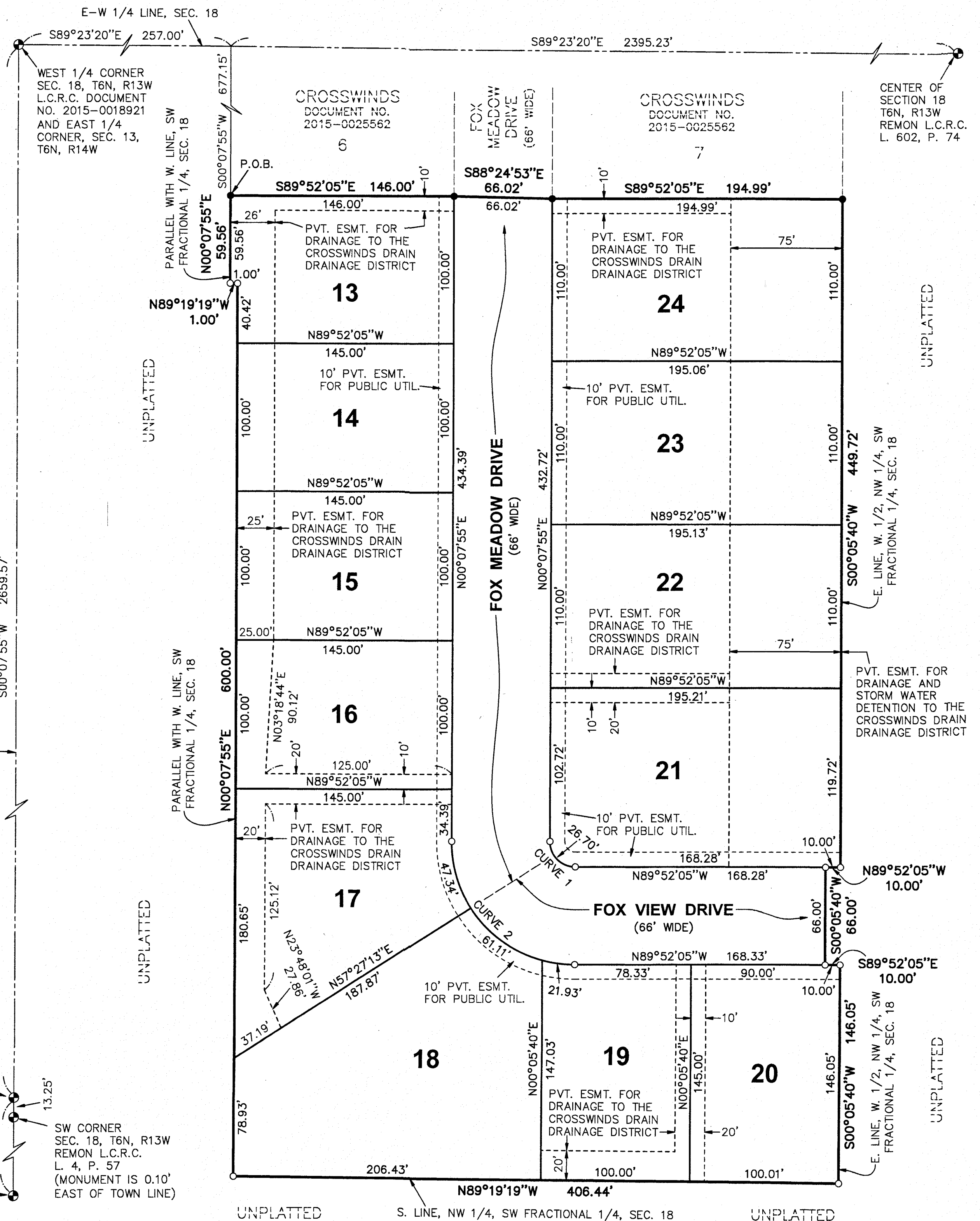
**LEGEND**

- ALL DIMENSIONS ARE IN FEET.
- CURVILINEAR MEASUREMENTS ARE ARC MEASUREMENTS.
- PLAT BEARINGS ARE BASED ON CROSSWINDS AS RECORDED IN DOCUMENT 2015-0025562.
- = SET MONUMENT WITH A 1/2" DIAMETER STEEL BAR, 36" LONG, ENCASED IN 4" DIAMETER CONCRETE.
- = FOUND MONUMENT WITH A 1/2" DIAMETER STEEL BAR, ENCASED IN 4" DIAMETER CONCRETE.
- ALL LOT CORNERS ARE MARKED BY 1/2" DIAMETER STEEL BARS, 18" IN LENGTH WITH SURVEY CAP MARKED EXXEL 33987.
- R = RADIAL. LINES NOT MARKED ARE NON-RADIAL.

SE CORNER  
SEC. 13, T6N, R14W  
REMON L.C.R.C.  
L. 1, P. 2

E 1/4 CORNER  
SEC. 24, T6N, R14W  
REMON L.C.R.C.  
L. 1, P. 3

SW CORNER  
SEC. 18, T6N, R13W  
REMON L.C.R.C.  
L. 4, P. 57  
(MONUMENT IS 0.10'  
EAST OF TOWN LINE)



# CROSSWINDS NO. 2

PART OF THE SW FRACTIONAL 1/4, SECTION 18, T6N, R13W,  
GEORGETOWN TOWNSHIP, OTTAWA COUNTY, MICHIGAN

SHEET 2 OF 2

CERTIFIED  
TRUE COPY

### COUNTY TREASURER'S CERTIFICATE

THE RECORDS IN MY OFFICE SHOW NO UNPAID TAXES OR SPECIAL ASSESSMENTS FOR THE 5 YEARS PRECEDING \_\_\_\_\_, 2019, INVOLVING THE LANDS INCLUDED IN THIS PLAT.

AMANDA PRICE, COUNTY TREASURER  
OTTAWA COUNTY

### COUNTY DRAIN COMMISSIONER'S CERTIFICATE

APPROVED ON \_\_\_\_\_, 2019, AS COMPLYING WITH 1967 PA 288, MCL 560.192 AND THE APPLICABLE RULES AND REGULATIONS PUBLISHED BY MY OFFICE IN THE COUNTY OF OTTAWA.

JOE BUSH, WATER RESOURCES COMMISSIONER

DATE: \_\_\_\_\_

### COUNTY ROAD COMMISSION CERTIFICATE

APPROVED ON \_\_\_\_\_, 2019, AS COMPLYING WITH 1967 PA 288, MCL 560.183 AND THE APPLICABLE PUBLISHED RULES AND REGULATIONS OF THE BOARD OF COUNTY ROAD COMMISSIONERS OF OTTAWA COUNTY.

JAMES MIEDEMA, CHAIRMAN

THOMAS J. ELHART, VICE CHAIRMAN

THOMAS E. BIRD, MEMBER

BETTY GAJEWSKI, MEMBER

TIMOTHY GRIFFHORST, MEMBER

DATE: \_\_\_\_\_

### MUNICIPAL CERTIFICATE

I CERTIFY THAT THIS PLAT WAS APPROVED BY THE TOWNSHIP BOARD OF THE TOWNSHIP OF GEORGETOWN, AT A MEETING HELD \_\_\_\_\_, 2019, AND WAS REVIEWED AND FOUND TO BE IN COMPLIANCE WITH 1967 PA 288, MCL 560.101 TO 560.293. SURETY FOR THE INSTALLATION OF PUBLIC WATER SERVICES, PUBLIC SEWER SERVICES, LOT CORNERS AND MONUMENTS HAS BEEN POSTED AND EXPIRES WITHIN ONE YEAR OF THE ABOVE DATE. PRELIMINARY PLAT APPROVAL WAS GRANTED BY THE OTTAWA COUNTY DEPARTMENT OF PUBLIC HEALTH ON OCTOBER 25, 2018.

RICHARD VANDERKLOK, CLERK

DATE: \_\_\_\_\_

### COUNTY PLAT BOARD CERTIFICATE

THIS PLAT HAS BEEN REVIEWED AND IS APPROVED BY THE OTTAWA COUNTY PLAT BOARD ON \_\_\_\_\_, 2019, AS BEING IN COMPLIANCE WITH ALL OF THE PROVISIONS OF 1967 PA 288, MCL 560.101 TO 560.293, AND THIS PLAT BOARD'S APPLICABLE RULES AND REGULATIONS.

GREG DE JONG, CHAIRPERSON, COUNTY BOARD CHAIR

JUSTIN F. ROEBUCK, SECRETARY, COUNTY CLERK / REGISTER OF DEEDS

AMANDA PRICE, COUNTY TREASURER

### PROPRIETOR'S CERTIFICATE

WESTON PROPERTY MANAGEMENT, LLC, 7748 FAWN MEADOW DRIVE, HUDSONVILLE, MI 49426, A LIMITED LIABILITY COMPANY, DULY ORGANIZED AND EXISTING UNDER THE LAWS OF THE STATE OF MICHIGAN BY, BRETT M. HONDERD, MEMBER, AS PROPRIETOR, HAS CAUSED THE LAND DESCRIBED IN THIS PLAT TO BE SURVEYED, DIVIDED, MAPPED AND DEDICATED AS REPRESENTED ON THIS PLAT AND THAT THE STREETS ARE FOR THE USE OF THE PUBLIC; THAT THE PUBLIC UTILITY EASEMENTS ARE PRIVATE EASEMENTS AND THAT ALL OTHER EASEMENTS ARE FOR THE USES SHOWN ON THE PLAT.

WESTON PROPERTY MANAGEMENT, LLC  
7748 FAWN MEADOW DRIVE  
HUDSONVILLE, MI 49426

STATE OF MICHIGAN FILE NO. E3080K  
FILED ON NOVEMBER 22, 2013

*Brett M. Honderd*  
BRETT M. HONDERD, MEMBER

### ACKNOWLEDGMENT

STATE OF MICHIGAN  
COUNTY OF KENT

THE FOREGOING INSTRUMENT WAS ACKNOWLEDGED BEFORE ME THIS 28<sup>th</sup> DAY OF JANUARY, 2019, BY BRETT M. HONDERD, MEMBER OF WESTON PROPERTY MANAGEMENT, LLC, A MICHIGAN LIMITED LIABILITY COMPANY, ON BEHALF OF THE LIMITED LIABILITY COMPANY.

*James A. Swanson*  
JAMES A. SWANSON  
NOTARY PUBLIC, KENT COUNTY, MICHIGAN  
MY COMMISSION EXPIRES: 01/09/2020

### RECORDING CERTIFICATE

STATE OF MICHIGAN  
OTTAWA COUNTY

THIS PLAT WAS RECEIVED FOR RECORD ON THE \_\_\_\_ DAY OF \_\_\_\_\_, 2019, AT \_\_\_\_\_ M. AND RECORDED IN DOCUMENT NUMBER \_\_\_\_\_

JUSTIN F. ROEBUCK, REGISTER OF DEEDS

### SURVEYOR'S CERTIFICATE

I, JAMES A. SWANSON, SURVEYOR, CERTIFY: THAT I HAVE SURVEYED, DIVIDED AND MAPPED THE LAND SHOWN ON THIS PLAT, DESCRIBED AS FOLLOWS: CROSSWINDS NO. 2, PART OF THE SW FRACTIONAL 1/4 OF SECTION 18, T6N, R13W, GEORGETOWN TOWNSHIP, OTTAWA COUNTY, MICHIGAN, DESCRIBED AS: COMMENCING AT THE WEST 1/4 CORNER OF SAID SECTION; THENCE S89°23'20"E 257.00 FEET ALONG THE EAST-WEST 1/4 LINE OF SAID SECTION; THENCE S00°07'55"W 677.15 FEET PARALLEL WITH THE WEST LINE OF SAID SW FRACTIONAL 1/4 TO THE SW CORNER OF CROSSWINDS (RECORDED IN DOCUMENT NO. 2015-0025562) AND THE POINT OF BEGINNING; THENCE S89°52'05"E 146.00 FEET ALONG THE SOUTH LINE OF SAID CROSSWINDS; THENCE S88°24'53"E 66.02 FEET ALONG SAID SOUTH LINE; THENCE S89°52'05"E 194.99 FEET ALONG SAID SOUTH LINE TO THE SE CORNER OF SAID CROSSWINDS; THENCE S00°05'40"W 449.72 FEET ALONG THE EAST LINE OF THE WEST 1/2 OF THE NW 1/4 OF SAID SW FRACTIONAL 1/4; THENCE N89°52'05"W 10.00 FEET; THENCE S00°05'40"W 66.00 FEET; THENCE S89°52'05"E 10.00 FEET TO THE EAST LINE OF THE WEST 1/2 OF THE NW 1/4 OF SAID SW FRACTIONAL 1/4; THENCE S00°05'40"W 146.05 FEET ALONG SAID EAST LINE; THENCE N89°19'19"W 406.44 FEET ALONG THE SOUTH LINE OF THE NW 1/4 OF SAID SW FRACTIONAL 1/4; THENCE N00°07'55"E 600.00 FEET PARALLEL WITH THE WEST LINE OF SAID SECTION; THENCE N89°19'19"W 1.00 FEET; THENCE N00°07'55"E 59.56 FEET PARALLEL WITH THE WEST LINE OF SAID SW FRACTIONAL 1/4 TO THE POINT OF BEGINNING.

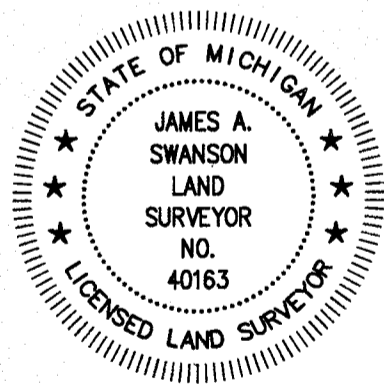
CONTAINS 12 LOTS AND 6.15 ACRES.

THAT I HAVE MADE SUCH SURVEY, LAND DIVISION AND PLAT BY THE DIRECTION OF THE OWNERS OF SUCH LAND. THAT SUCH PLAT IS A CORRECT REPRESENTATION OF ALL THE EXTERIOR BOUNDARIES OF THE LAND SURVEYED AND THE SUBDIVISION OF IT. THAT THE REQUIRED MONUMENTS AND LOT MARKERS HAVE BEEN LOCATED IN THE GROUND OR THAT SURETY HAS BEEN DEPOSITED WITH THE MUNICIPALITY AS REQUIRED BY THE ACT. THAT THE ACCURACY OF THE SURVEY IS WITHIN THE LIMITS REQUIRED BY THE ACT. THAT THE BEARINGS SHOWN ON THE PLAT ARE EXPRESSED AS REQUIRED BY THE ACT AND AS EXPLAINED IN THE LEGEND.

JANUARY 25, 2019

EXXEL ENGINEERING, INC.  
5252 CLYDE PARK, S.W.  
GRAND RAPIDS, MI 49509-9724

*James A. Swanson*  
JAMES A. SWANSON, VICE PRESIDENT  
PROFESSIONAL SURVEYOR NO. 40163



### SURVEYOR CERTIFICATION OF TRUE COPY

I, JAMES A. SWANSON, SURVEYOR, CERTIFY:

THAT PURSUANT TO SECTION 560.101 TO 560.293, THIS IS A TRUE COPY OF THE FINAL PLAT OF CROSSWINDS NO. 2, PART OF THE SW FRACTIONAL 1/4, SECTION 18, T6N, R13W, GEORGETOWN TOWNSHIP, OTTAWA COUNTY, MICHIGAN; AND, THAT THE FINAL PLAT IS SUBJECT TO THE APPROVAL OF EACH OF THE FOLLOWING AGENCIES (WHOSE APPROVAL IS REQUIRED UNDER SECTION 560.101 TO 560.293):

JOE BUSH, COUNTY WATER RESOURCES COMMISSIONER  
JAMES MIEDEMA, CHAIRMAN, COUNTY ROAD COMMISSION  
RICHARD VANDERKLOK, GEORGETOWN TOWNSHIP CLERK  
GREG DE JONG, CHAIRPERSON, COUNTY PLAT BOARD CHAIR  
JUSTIN F. ROEBUCK, COUNTY CLERK/REGISTER OF DEEDS, COUNTY PLAT BOARD  
AMANDA PRICE, COUNTY TREASURER, COUNTY PLAT BOARD

January 29, 2019

*James A. Swanson*  
JAMES A. SWANSON, P.S. NO. 40163