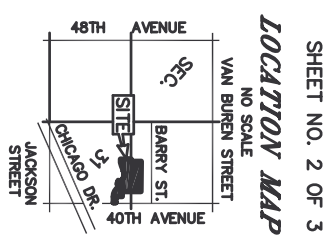
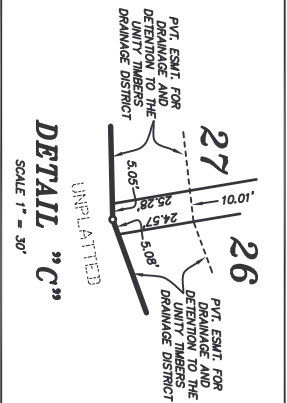
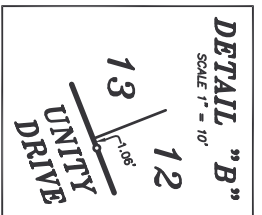
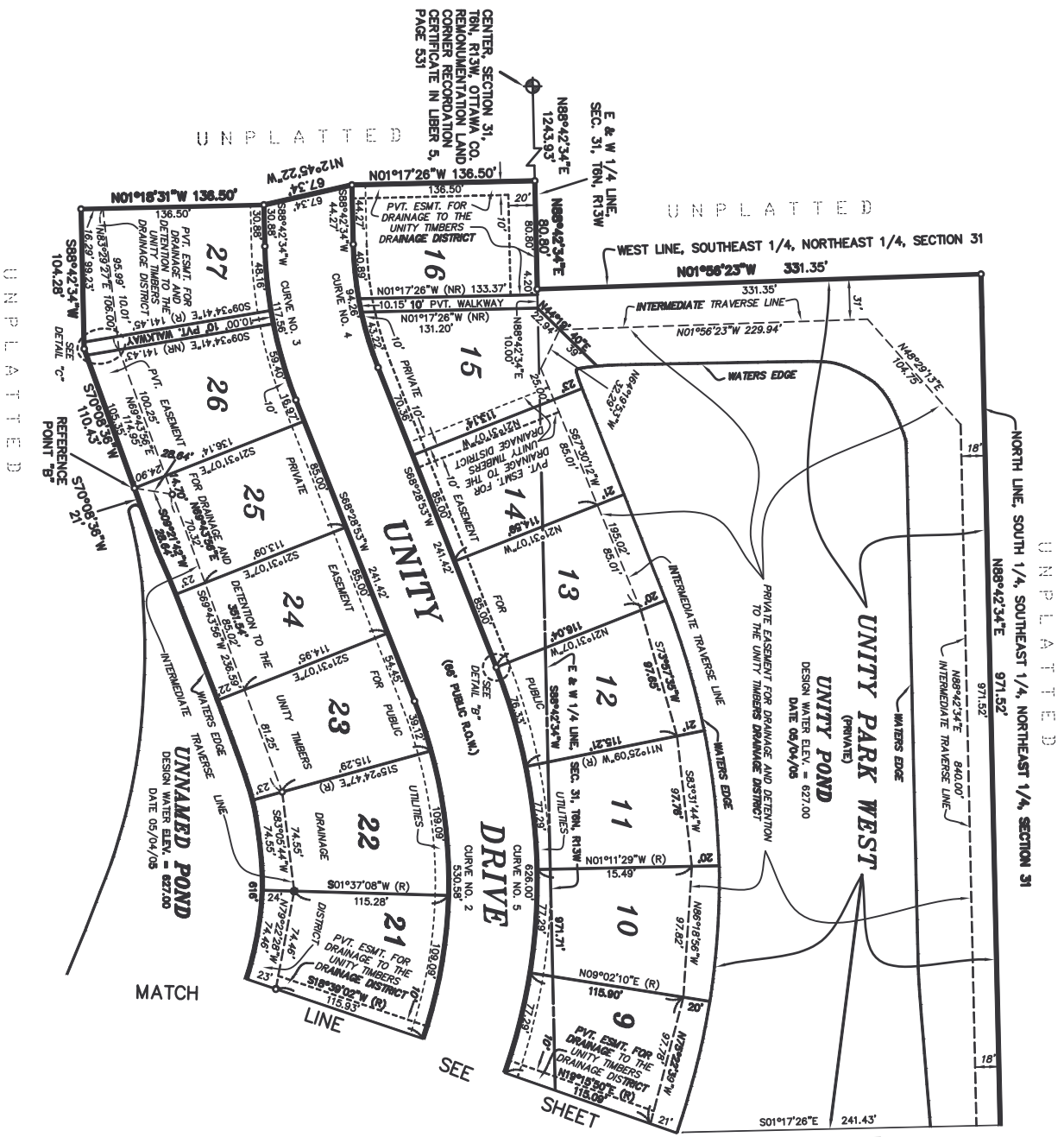


UNITY TIMBERS
 PART OF THE NE 1/4 & SE 1/4 OF SECTION 31, T6N, R13W
 GEORGETOWN TOWNSHIP, OTTAWA COUNTY, MICHIGAN



LEGEND
 All dimensions are in feet.
 Curvilinear measurements are arc measurements.
 Monuments of steel bars 1/2 inch in diameter and 36 inches long and encased in concrete 4 inches in diameter have been placed at all points marked thus (o).
 All lot corners are marked by 1/2 inch in diameter steel bars 18 inches in length.
 Plat bearings were established from the bearings on "PLEASANT RIDGE GARDENS" as recorded in Liber 24 of Plats, Pages 17 & 18.
 (R) = Rodial.
 (NR) = Nonradial.
 (o) = Found 1/2 inch diameter steel bar encased in concrete monument 36 inches in length.

CURVE	LENGTH	RADIUS	CHORD	BEARING	DELTA
CURVE NO. 2	530.58'	367.00'	485.57'	N70°08'06"W	82°50'02"
CURVE NO. 3	117.56'	333.00'	116.95'	N78°55'44"E	20°13'41"
CURVE NO. 4	84.26'	287.00'	83.77'	N78°35'44"E	20°13'41"
CURVE NO. 5	626.00'	433.00'	572.89'	N70°08'06"W	82°50'02"

RESTRICTION NOTE
 This Plat is subject to Restrictions as required by Act 286, of 1967, as amended, on certain lots with respect to the requirements of the Michigan Department of Environmental Quality and/or the _____, as per records of this county.

RAUNDAL J. WUGTEVEEN
 VICE PRESIDENT / SECRETARY
 PROFESSIONAL SURVEYOR NO. 28429
 Nederveld Associates Surveying, Inc.
 Engineering - Land Planning - Surveying
 5570 32nd Avenue / P.O. Box 10
 Hudsonville, Michigan 49426