

REVISIONS	
ISSUANCES	6-21-05 SITE PLAN REVIEW 7-12-05 REVISED SITE PLAN REVIEW
DATE	07/15/2005 04:07:45 PM
DRAWN BY	TDW

**PRELIMINARY  
 NOT FOR CONSTRUCTION**

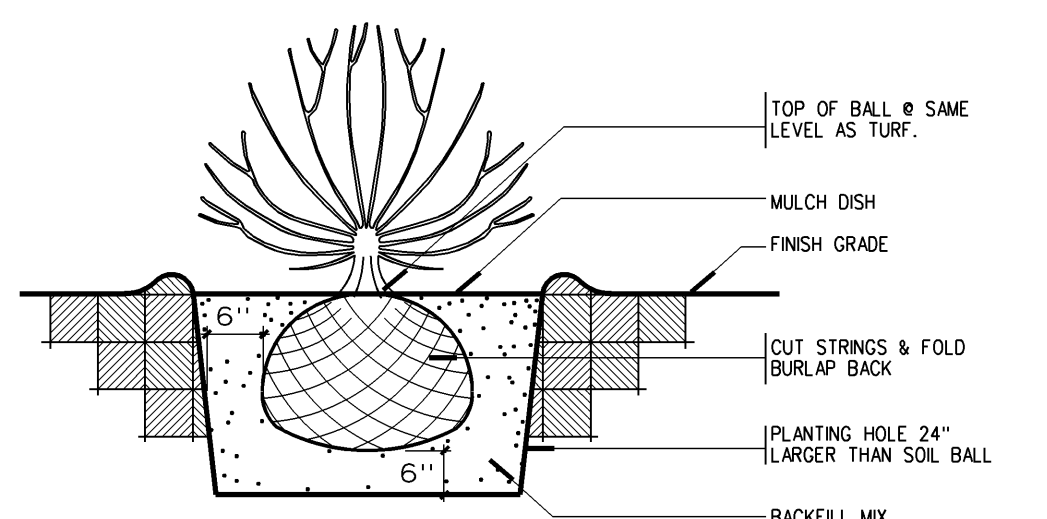
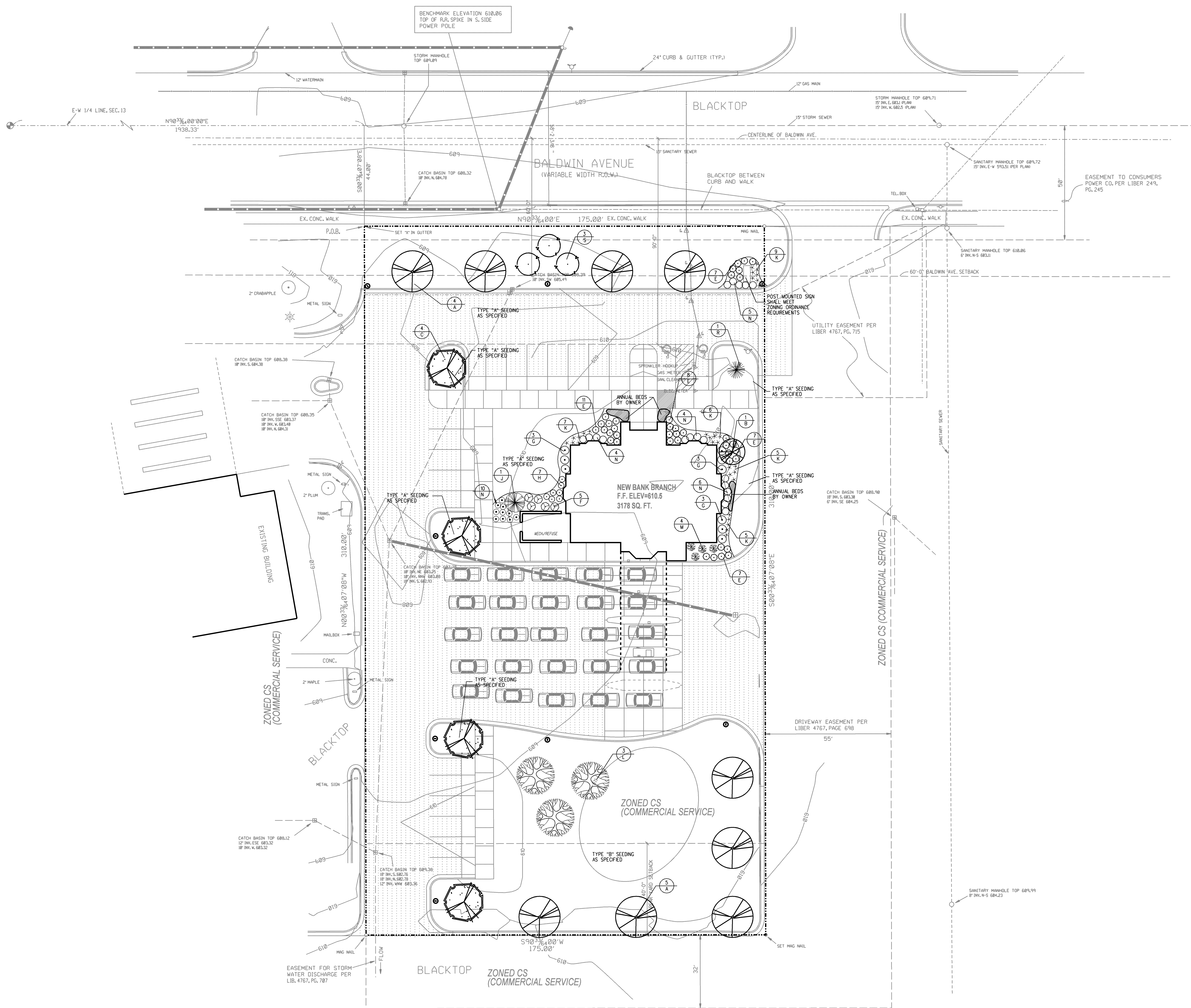
**JENISON BRANCH  
 MACATAWA BANK**  
 JENISON, MICHIGAN

Drawings shall not be reproduced without written authorization from GMB Architects-Engineers

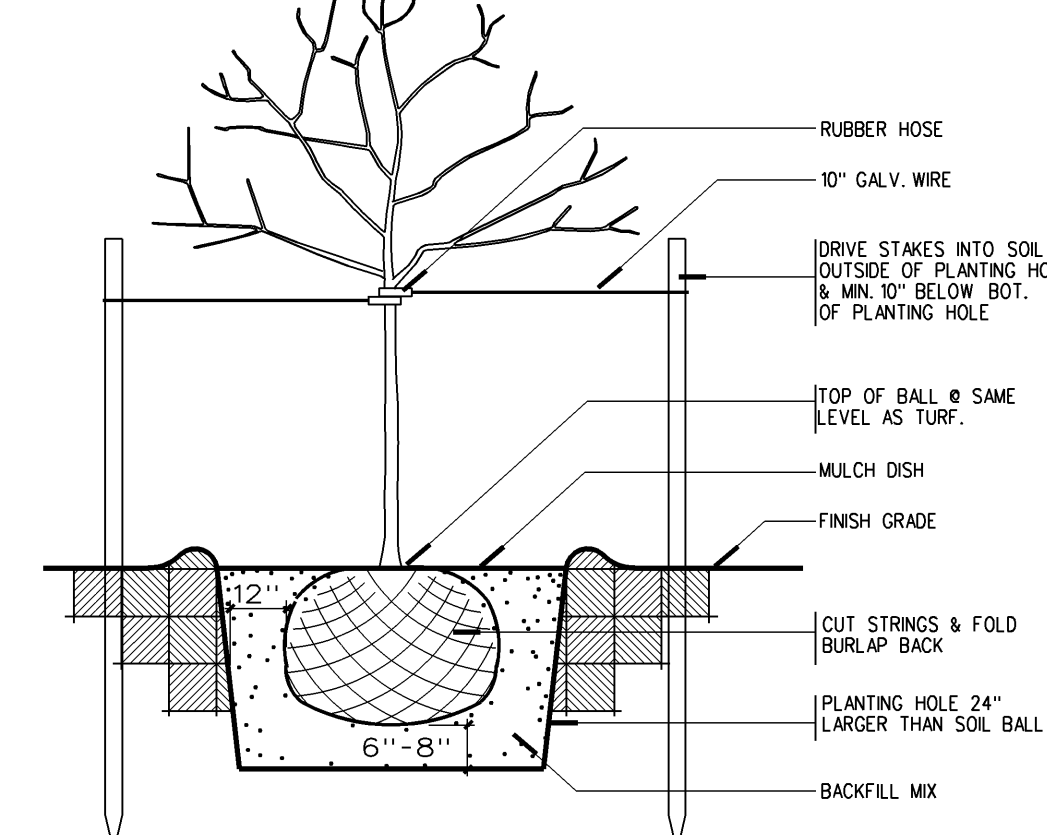
PROJECT NO. 5-0306  
 Copyright © 2005  
 GMB Architects - Engineers  
 All Rights Reserved

LANDSCAPE AND SOIL EROSION CONTROL PLAN

**C4.01**



**2 SHRUB PLANTING DETAIL**  
 C4.01 NOT TO SCALE



**1 TREE PLANTING DETAIL**  
 C4.01 NOT TO SCALE

**SOIL EROSION CONTROL**

2	SELECTIVE GRADING & SHAPING	15	PAVING
5	SEEDING	16	CURB & GUTTER
6	SEEDING WITH MULCH &/OR MATTING	38	CATCH BASIN DRAIN INLET
13	WRAP, RUBBLE GARDENS	57	GEOTEXTILE SALT FENCE

**PLANT LEGEND**

- A. TREX QUINCY LITTLE LEAF LINEN 3" CAL.
- B. AMELANCHIER CANADENSIS SEEDLING 10 FT.
- C. ACER RUBRUM 'OCTOBER GLORY' OCTOBER GLORY RED MAPLE 3" CAL.
- D. PSEUDOTSUGA MENZESII 3" CAL.
- E. JUNIPERUS SHABRA 'BROADMOOR' BROADMOOR JUNIPER 20"
- F. SPIRAEA 'BURNING BUSH' WATERBURY WATERBURY SPIRAEA 24"
- G. VIBURNUM TRELOUM 'COMPACTUM' COMPACT AMERICAN CHAMBERLAINSH 30" B&B
- H. PENNELLUM ALPESICUM 'LITTLE BLISS' LITTLE BLISS DWARF FOUNTAIN GRASS 1 GAL.
- I. RUBROCOCA FULGIDA SPECIOSA 'GOLDSTURM' BLACK EYED SUSAN 1 GAL.
- J. HEMEROCALLIS 'STELLA DE ORO' STELLA DE ORO DAYLILY 1 GAL.
- K. QUERCUS PALMATUS PN OAK 3" CAL.
- L. EX. CHINA OAK CHINA OAK HOLLY 30"
- M. VIBURNUM LENTAGO 'MANNING' VIBURNUM 30" B&B
- N. JUNIPERUS S. TAMARISCIFOLIA TAMAR JUNIPER 30"
- O. CALAMAGROSTIS X ACUTIFOLIA 'KARL FORSTNER' KARL FORSTNER FEATHER REED GRASS 2 CAL.
- P. JUNIPERUS CHINENSIS 'ARMSTRONG' ARMSTRONG JUNIPER 24"
- Q. PICEA MARMICA COLORADO BLUE SPRUCE 6 FT.
- R. MALUS 'DONALD WYMAN' DONALD WYMAN CHINA 3" CAL.

**SOIL EROSION CONTROL NOTES**

1. EROSION AND SEDIMENTATION CONTROL MEASURES ARE SHOWN IN LINE DRAWINGS TO SUGGEST GENERAL CONCEPTS. ACTUAL CONSTRUCTION MAY BE VARY TO REFLECT MATERIALS USED AND SPECIFIC SITE PROBLEMS SUBJECT TO THE APPROVAL OF THE ARCHITECT/ENGINEER.
2. COLLECTED SOIL AND SEDIMENT SHALL BE REMOVED PERIODICALLY TO MAINTAIN THE EFFECTIVENESS OF THE SEDIMENTATION BASIN.
3. TEMPORARY EROSION AND POLLUTION CONTROL PROVISIONS SHALL BE COORDINATED WITH THE PERMANENT CONSTRUCTION MEASURES TO ASSURE EFFECTIVE CONTROL OF WATER POLLUTION DURING CONSTRUCTION.
4. ALL TEMPORARY EROSION CONTROL MEASURES SHALL BE REMOVED AT THE COMPLETION OF CONSTRUCTION UNLESS SPECIFIED BY THE ARCHITECT/ENGINEER TO BE LEFT IN PLACE.
5. SOIL AND SEDIMENTATION CONTROL MEASURES SHALL BE IN PLACE BEFORE ON SITE CONSTRUCTION BEGINS.
6. REFER TO SOIL REPORT AND SPECIFICATION FOR ADDITIONAL INFORMATION.
7. REFER TO SOIL EROSION CONTROL KEY FOR ADDITIONAL INFORMATION.

**LANDSCAPING NOTES**

1. ALL PLANTING BEDS SHALL BE HARDWOOD BARK MULCH 4" DEEP.
2. ALL TREES OUTSIDE PLANTING BEDS SHALL HAVE 5" DIA. CIRCLE OF SHREDDED HARDWOOD BARK MULCH 4" DEEP WITH ALUMINUM LAMIN EDGERS AS SPECIFIED.
3. PLANTING HOLE PREPARATION FOR TREES SHALL CONSIST OF ONE HALF TOPSOIL AND ONE HALF APPROVED COMMERCIAL HORTICULTURE PEAT MOSS.
4. ALL AREAS DISTURBED DURING CONSTRUCTION SHALL BE REPAIRED AND SEEDING AS PER SPECIFIED TOPSOIL, MULCH, ALL STAKES AND STAKE BEING REMOVED.
5. REFER TO TREE CHECKLIST AND TREE CHECKLIST FOR ADDITIONAL INFORMATION.
6. ALL TREE LOCATIONS TO BE STAKED AND APPROVED BY LANDSCAPE ARCHITECT PRIOR TO INSTALLATION.



**3 WORKING DAYS  
 BEFORE YOU DIG  
 CALL MISS DIG  
 1-800-487-7071  
 (TOLL FREE)**