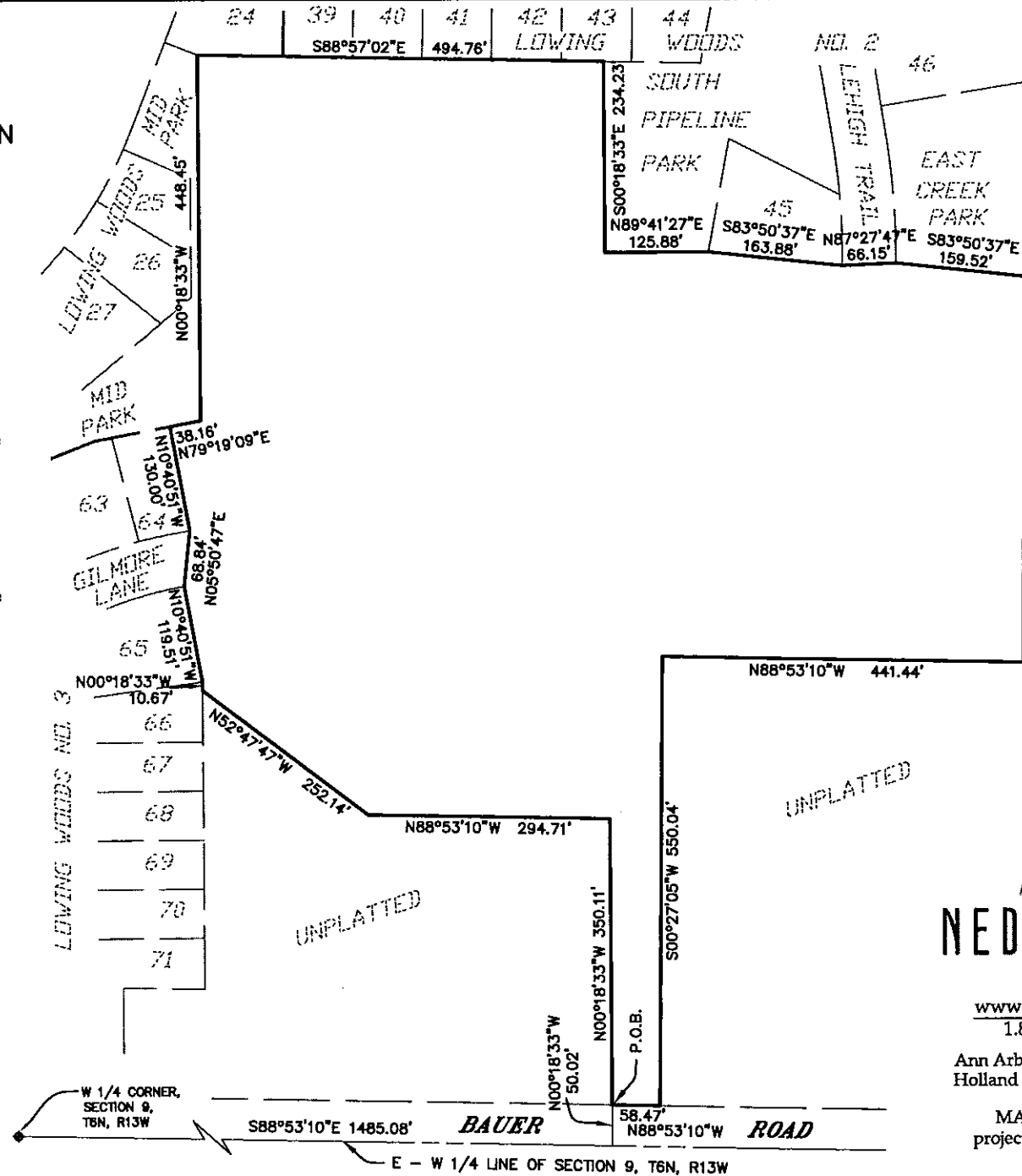
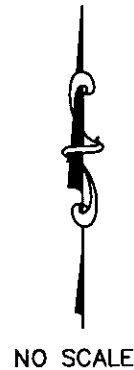


EXHIBIT "A"

LOWING WOODS NO. 5

PART OF THE NW 1/4 OF SECTION 9, T6N, R13W,
GEORGETOWN TOWNSHIP, OTTAWA COUNTY, MICHIGAN

Part of the Northwest 1/4 of Section 9, T6N, R13W, Georgetown Township, Ottawa County, Michigan, described as: Commencing at the West 1/4 corner of said Section; thence S88°53'10"E 1485.08 feet along the East-West 1/4 line of said Section; thence N00°18'33"W 50.02 feet to the Point of Beginning; thence N00°18'33"W 350.11 feet; thence N88°53'10"W 294.71 feet; thence N52°47'47"W 252.14 feet; thence N00°18'33"W 10.67 feet; thence N10°40'51"W 119.51 feet; thence N05°50'47"E 68.84 feet; thence N10°40'51"W 130.00 feet; thence N79°19'09"E 38.16 feet; thence N00°18'33"W 448.45 feet; thence S88°57'02"E 494.76 feet; thence S00°18'33"E 234.23 feet; thence N89°41'27"E 125.88 feet; thence S83°50'37"E 163.88 feet; thence N87°27'47"E 66.15 feet; thence S83°50'37"E 159.52 feet (the previous 12 courses being along the boundary of Lowing Woods No. 3, Lowing Woods and Lowing Woods No. 2); thence S00°27'05"W 473.49 feet parallel with and 792.00 feet West of the North-South 1/4 line of said Section; thence N88°53'10"W 441.44 feet; thence S00°27'05"W 550.04 feet; thence N88°53'10"W 58.47 feet to the Point of Beginning. Containing 16.84 acres.



www.nederveld.com
1.800.222.1868

Ann Arbor Grand Rapids
Holland Hudsonville

MARCH 27, 2007
project no. 06101609BG

© 2007 Nederveld, Inc.