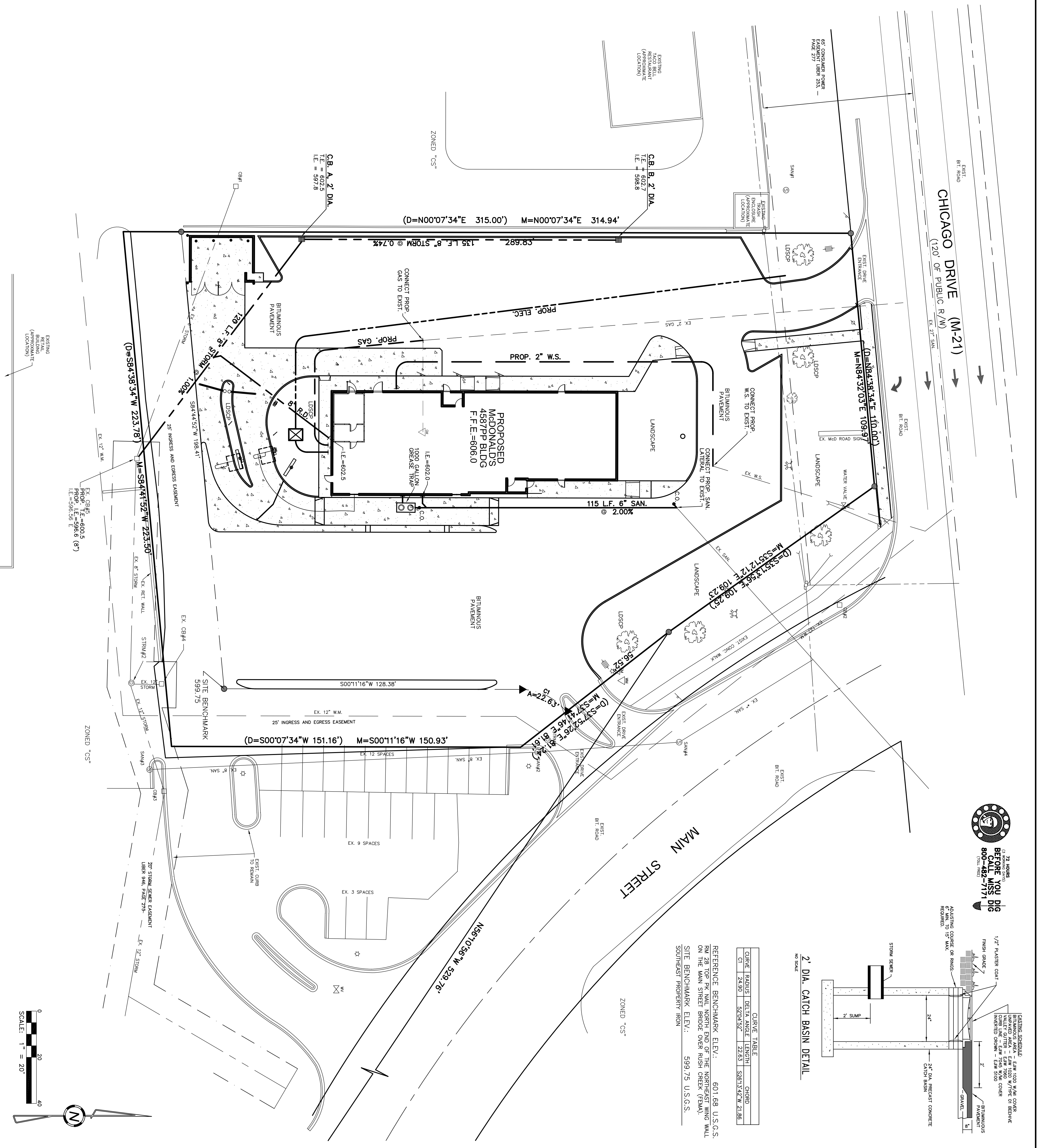


CURVE	RADIUS	DELTA ANGLE	LENGTH	CHORD
CB#1	24.90'	52°04'52"	22.653'	15.873322' W 21.88'

REFERENCE BENCHMARK ELEV.: 601.68 U.S.G.S.  
 BUT 28' TOP OF KILL NORTH END OF THE NORTHEAST RAINWALL  
 ON THE MAIN STREET BRIDGE OVER RUSH CREEK (TRMA)  
 SITE BENCHMARK ELEV.: 599.75 U.S.G.S.  
 SOUTHEAST PROPERTY IRON



**SITE GRADING & UTILITY NOTES**

- ANY WORK WITHIN CHICAGO DRIVE E/W REQUIRES A PERMIT FROM THE MICHIGAN DEPT. OF TRANSPORTATION.
- VERIFY LOCATION AND ELEVATION OF SANITARY AND WATER SERVICES PRIOR TO CONSTRUCTION.
- UTILITY AND EXISTING UTILITY CONNECTIONS AS SHOWN COORDINATE WITH THE APPROPRIATE UTILITY PROVIDERS PRIOR TO CONSTRUCTION. MAINTAIN ACCESS TO EASTERN DRIVE ALONG MAIN STREET.
- CONTRACTOR TO PROVIDE TRAFFIC CONTROL AS REQUIRED DURING CONSTRUCTION. MAINTAIN ACCESS TO EASTERN DRIVE ALONG MAIN STREET.
- PROPOSED SITE IMPROVEMENTS RESULT IN A NET REDUCTION OF IMPERVIOUS SURFACE.
- EXISTING IMPERVIOUS SURFACE = 42,600 S.F. ±  
 PROPOSED IMPERVIOUS SURFACE = 40,650 S.F. ±  
 NET REDUCTION = 1,950 S.F. ±
- THE SITE LIES WITHIN A 100-yr FLOODPLAIN (ELEVATION = 605). A PERMIT HAS BEEN APPLIED FOR FROM THE MDCO TO PLACE FILL IN THE FLOODPLAIN TO RAISE THE LOWEST OPENING OF THE PROPOSED BUILDING 1.0' ABOVE THE FLOODPLAIN ELEVATION.

**SEWERS**

ITEM	DESCRIPTION	INVERT	PIPE SIZE	R/W
STRM#1	SANITARY MANHOLE	N 596.64	12" RCP	599.61
CB#1	CATCHBASIN	NE 595.97	12" RCP	599.87
CB#2	CATCHBASIN	W 596.89	6" RCP	604.08
CB#3	CATCHBASIN	NW 602.08	12" RCP	600.13
CB#4	CATCHBASIN	SW 596.29	12" RCP	598.85
CB#5	CATCHBASIN	E 596.78	12" RCP	599.39

**SEWERS**

ITEM	DESCRIPTION	INVERT	PIPE SIZE	R/W
SAW#1	SANITARY MANHOLE	N 591.20	8" RCP	603.06
SAW#2	SANITARY MANHOLE	N 591.24	8" RCP	600.33
SAW#3	SANITARY MANHOLE	NW 590.14	8" RCP	604.41
STRM#1	SANITARY MANHOLE	SE 590.31	8" RCP	602.82

**PARKING INFORMATION**

TOTAL SPACES	30	SPACES 9' X 21'	60 *
	26	SPACES 9' X 20'	90 *
	3	HOPP SPACES 8' X 18'	60 *

**SITE PLANNING & ENGINEERING**

**DCI Engineering, P.C.**  
 2534 Black Creek Road  
 Muskegon, MI 49444  
 Phone: (616) 787-2781  
 Fax: (616) 787-2185  
 Bypass Center, MI 49315

**UTILITY PLAN**

PROJECT STREET ADDRESS	160 CHICAGO DRIVE (M-21)
TOWNSHIP	STATE
COUNTY	OTTAWA
GEOMETOWN	MICHIGAN
REGIONAL DWG. NO.	MI-06-109
SITE LOCATION CODE NO.	021-0204

REV	DATE	DESCRIPTION	BY	ISSUE REF
1	7/10/06	REVISED PER PRE-APPLICATION MEETING		
2	7/18/06	ISSUED FOR SITE PLAN APPROVAL		



THESE PLANS AND SPECIFICATIONS ARE THE PROPERTY OF McDONALD'S CORPORATION AND SHALL NOT BE REPRODUCED WITHOUT THEIR WRITTEN PERMISSION.

OFFICE	MICHIGAN REGION
ADDRESS	1021 KARL GREMEL DR., STE. 200 BRIGHTON, MI 48116 PH: (734) 335-9000 FX: (734) 335-9001

STATUS	DATE	BY
REGIONAL MGR.		
CONST. MGR.		
OPERATIONS DEPT.		
REAL ESTATE DEPT.		
CONTRACTOR		
OWNER		

DATE	DATE	BY
DATE DRAWN	6/28/06	JAC
PLAN CHECKED	6/28/06	JMB
AS-BUILT		

**C3**

DCI #00037