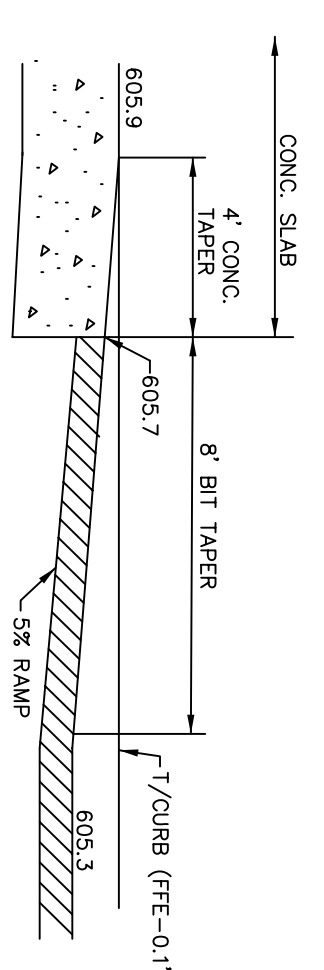




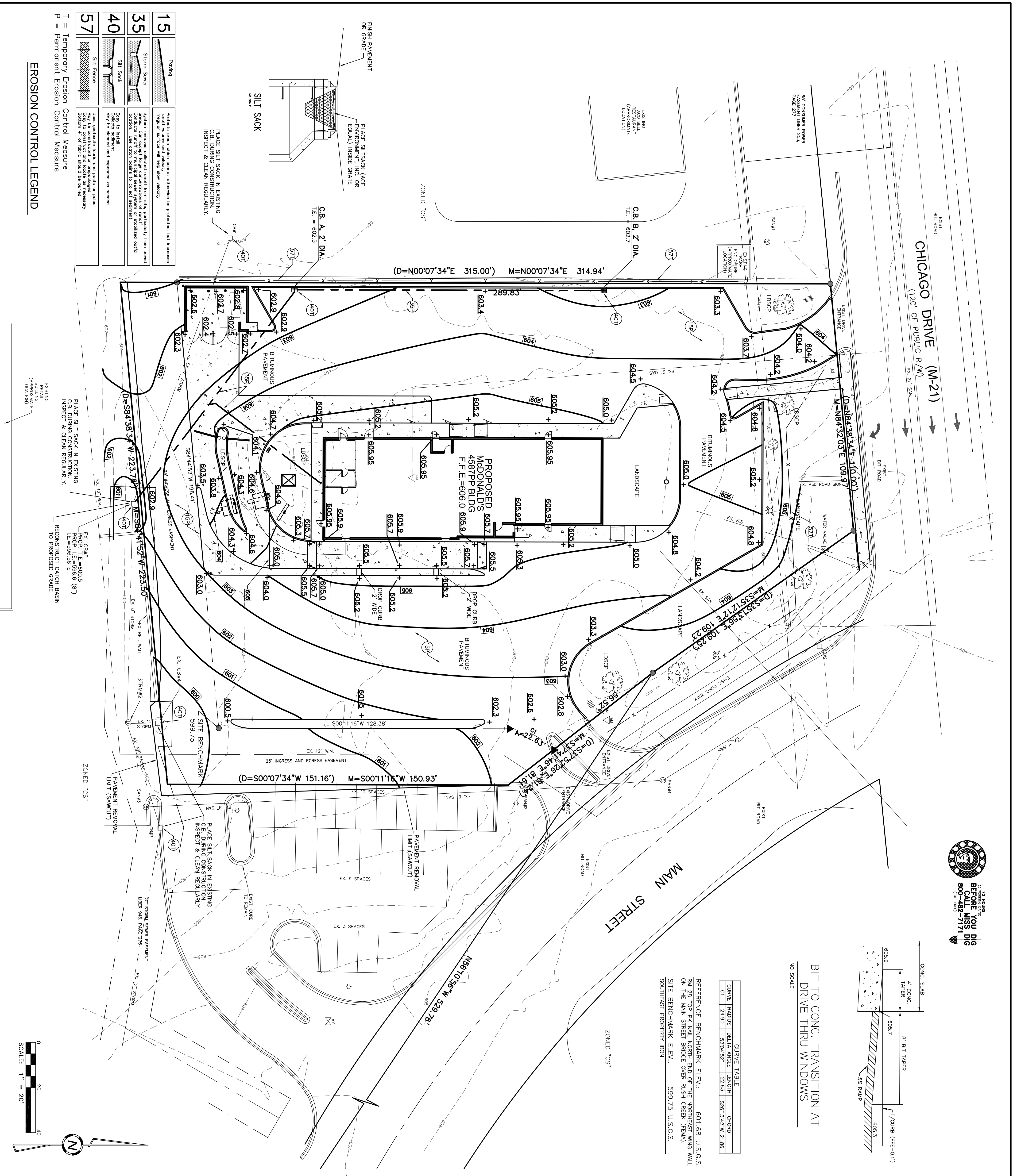
CHICAGO DRIVE (M-21)
(120' OF PUBLIC R/W)

BIT TO CONC. TRANSITION AT
DRIVE THRU WINDOWS
NO SCALE



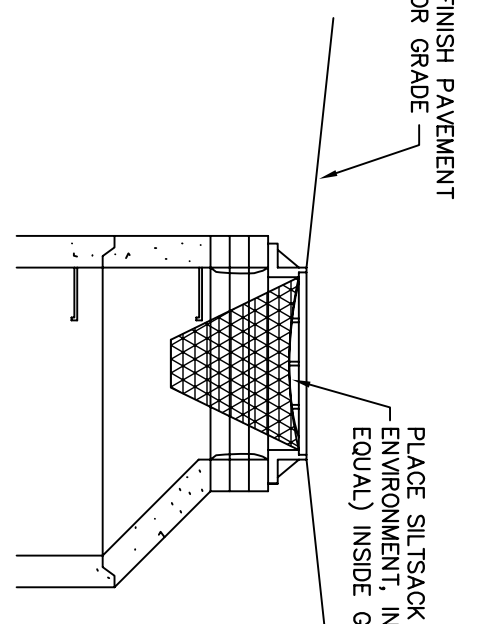
| CURVE | RADIUS | DELTA ANGLE | LENGTH | CHORD |
|-------|--------|-------------|--------|--------------------|
| C1 | 24.90' | 52°04'52" | 22.63' | S86°13'22"W 21.88' |

REFERENCE BENCHMARK ELEV.: 601.68 U.S.G.S.
RUT 28 TOP FOR KILL NORTH END OF THE NORTHEAST LANE WALL
ON THE MAIN STREET BRIDGE OVER RUSH CREEK (FMA)
SITE BENCHMARK ELEV.: 599.75 U.S.G.S.
SOUTHEAST PROPERTY IRON



- 15** Paving
- 35** Storm Sewer
- 40** Silt Sack
- 57** Silt Fence

PLACE SILT SACK IN EXISTING
C.B. DURING CONSTRUCTION,
INSPECT & CLEAN REGULARLY.



EROSION CONTROL LEGEND

T = Temporary Erosion Control Measure
P = Permanent Erosion Control Measure

SITE GRADING & UTILITY NOTES

- ANY WORK WITHIN CHICAGO DRIVE R/W REQUIRES A PERMIT FROM THE MICHIGAN DEPT. OF TRANSPORTATION.
- VERIFY LOCATION AND ELEVATION OF SANITARY AND WATER SERVICES PRIOR TO CONSTRUCTION.
- UTILITY AND EXISTING UTILITY CONNECTIONS AS SHOWN COORDINATE WITH THE APPROPRIATE UTILITY PROVIDERS PRIOR TO CONSTRUCTION.
- CONTRACTOR TO PROVIDE TRAFFIC CONTROL AS REQUIRED DURING CONSTRUCTION. MAINTAIN ACCESS TO EASTERN DRIVE ALONG MAIN STREET.
- PROPOSED SITE IMPROVEMENTS RESULT IN A NET REDUCTION OF IMPERVIOUS SURFACE.
- EXISTING IMPERVIOUS SURFACE = 42,600 S.F.
PROPOSED IMPERVIOUS SURFACE = 40,650 S.F.
NET REDUCTION = 1,950 S.F.
- THE SITE LIES WITHIN A 100'-YR FLOODPLAIN (ELEVATION = 605'). A PERMIT HAS BEEN APPLIED FOR FROM THE MDCO TO PLACE FILL IN THE FLOODPLAIN TO RAISE THE LOWEST OPENING OF THE PROPOSED BUILDING 1.0' ABOVE THE FLOODPLAIN ELEVATION.

| ITEM | DESCRIPTION | INVERT | PIPE SIZE | R/W |
|--------|-------------|-----------|-----------|--------|
| STRM#2 | STORM | N 596.64 | 12" RCP | 599.61 |
| MANH#2 | MANHOLE | NE 595.97 | 12" RCP | |
| CB#1 | CATCHBASIN | W 596.89 | 6" RCP | 599.87 |
| CB#2 | CATCHBASIN | NW 602.08 | 12" RCP | 604.08 |
| CB#3 | CATCHBASIN | SW 596.29 | 12" RCP | 600.13 |
| CB#4 | CATCHBASIN | E 598.13 | 12" RCP | 598.85 |
| CB#5 | CATCHBASIN | NW 597.05 | 6" RCP | 599.39 |
| CB#6 | CATCHBASIN | E 596.95 | 6" RCP | |

| TOTAL SPACES | 30 | SPACES 9' X 21' | 60 * |
|--------------|----|-----------------|------------|
| 59 | 26 | SPACES 9' X 20' | 90 * |
| | 3 | HOP | 18' @ 60 * |

DCI Engineering, P.C.
160 CHICAGO DRIVE (M-21)
WESTSHORE CONSULTING
2534 BLACK CREEK ROAD
MUSKEGON, MI 49444 (DATED: 7/31/2001)

| | | | |
|-------------------|-----------|------------------------|---------------|
| REGIONAL DWG. NO. | MI-06-109 | SITE LOCATION CODE NO. | 021-0204 |
| TOWNSHIP | STATE | COUNTY | CITY/TOWNSHIP |
| GEORGETOWN | MICHIGAN | OTTAWA | |

| REV | DATE | DESCRIPTION | BY | ISSUE REF |
|-----|---------|-------------------------------------|----|-----------|
| 1 | 7/10/06 | REVISED PER PRE-APPLICATION MEETING | | |
| 2 | 7/18/06 | ISSUED FOR SITE PLAN APPROVAL | | |



THESE PLANS AND SPECIFICATIONS ARE THE PROPERTY OF McDONALD'S CORPORATION AND SHALL NOT BE REPRODUCED WITHOUT THEIR WRITTEN PERMISSION.

| | |
|---------|---|
| OFFICE | MICHIGAN REGION |
| ADDRESS | 1021 KARL GREMEL DR., STE. 200 BRIGHTON, MI 48116 PH: (734) 335-9000 FX: (734) 335-9001 |

| | | |
|-------------------|------|----|
| STATUS | DATE | BY |
| REGIONAL MGR. | | |
| CONST. MGR. | | |
| OPERATIONS DEPT. | | |
| REAL ESTATE DEPT. | | |
| CONTRACTOR | | |
| OWNER | | |

02

DCI #00037