

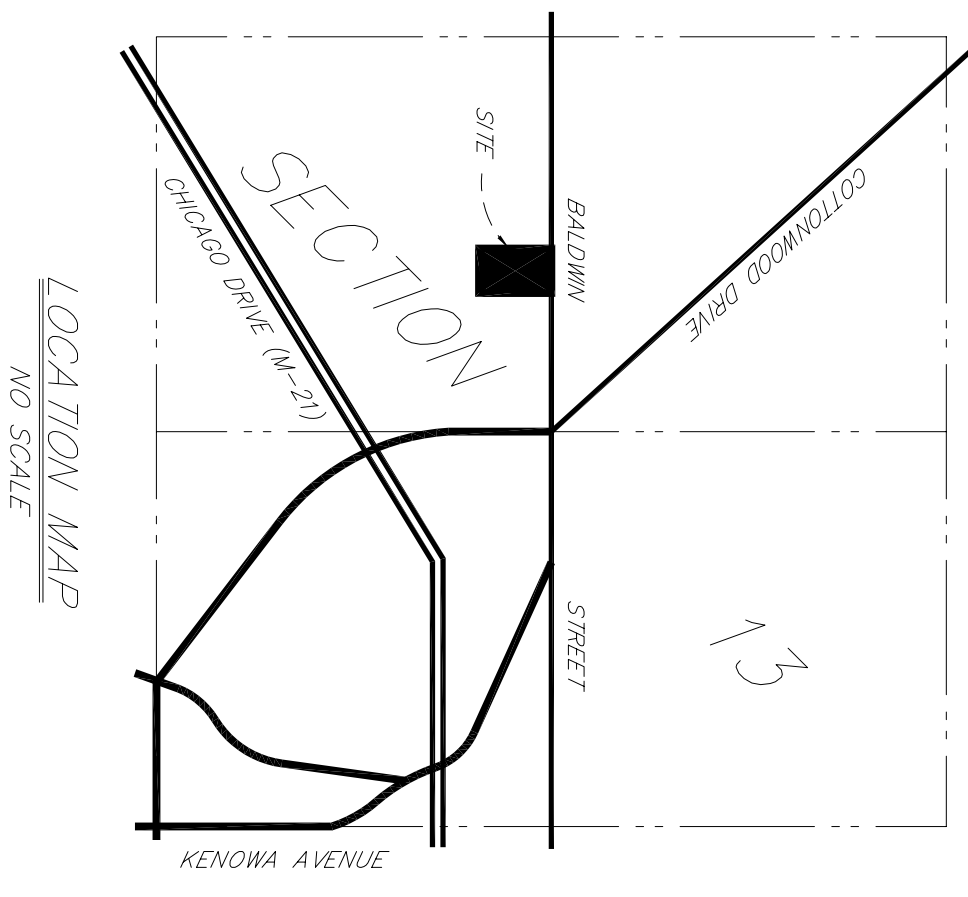
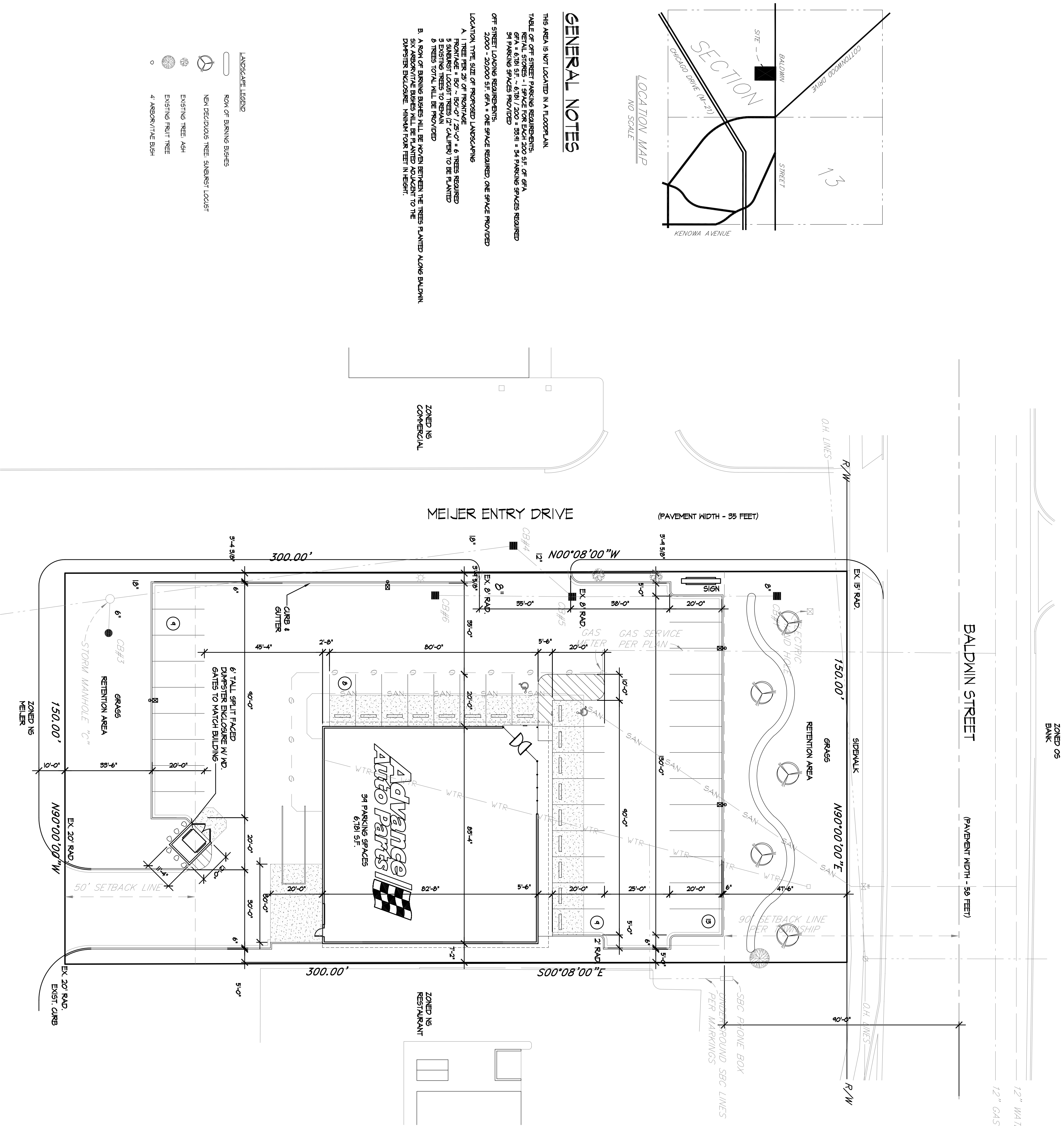


PROJECT LOCATION:
600 BALDWIN
JENISON, MI 49428
1.033 AC. - ZONED NS

Project No. AD128
File Name:
Date: 8/30/05
Revision: 9/8/05

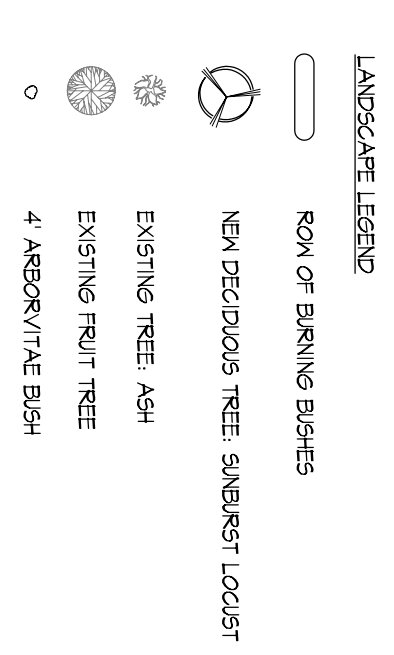
9/14/05
9/28/05
10/7/05

Sheet Title:
ZONING SITE PLAN



GENERAL NOTES

THIS AREA IS NOT LOCATED IN A FLOODPLAIN.
TABLE OF OFF STREET PARKING REQUIREMENTS:
RETAIL STORES - 1 SPACE FOR EACH 200 SF. OF GFA
GFA = 6781 SF. - 6781 / 200 = 33.91 = 34 PARKING SPACES REQUIRED
34 PARKING SPACES PROVIDED
OFF STREET LOADING REQUIREMENTS:
2000 - 20000 SF. GFA = ONE SPACE REQUIRED ONE SPACE PROVIDED
LOCATION, TREE SIZE OF PROPOSED LANDSCAPING
A. 1 TREE PER 25' OF FRONTAGE
FRONTAGE = 150' - 150' / 25' = 6 TREES REQUIRED
5 SHARPEST LOCUST TREES (2" CALIBER) TO BE PLANTED
8 TREES TOTAL WILL BE PROVIDED
B. A ROW OF BURNING BUSHES WILL BE NOVEN BETWEEN THE TREES PLANTED ALONG BALDWIN.
DIVESTER ENCLOSURE MINIMUM FOUR FEET IN HEIGHT



A SCHEMATIC SITE LAYOUT
SCALE 1"=20'-0"