



PROJECT LOCATION:

600 BALDWIN

JENISON, MI 49428

1.033 AC. - ZONED NS

Project No. AD128

File Name:

Date: 8/30/05

Revision: 9/8/05

9/14/05

Sheet Title:

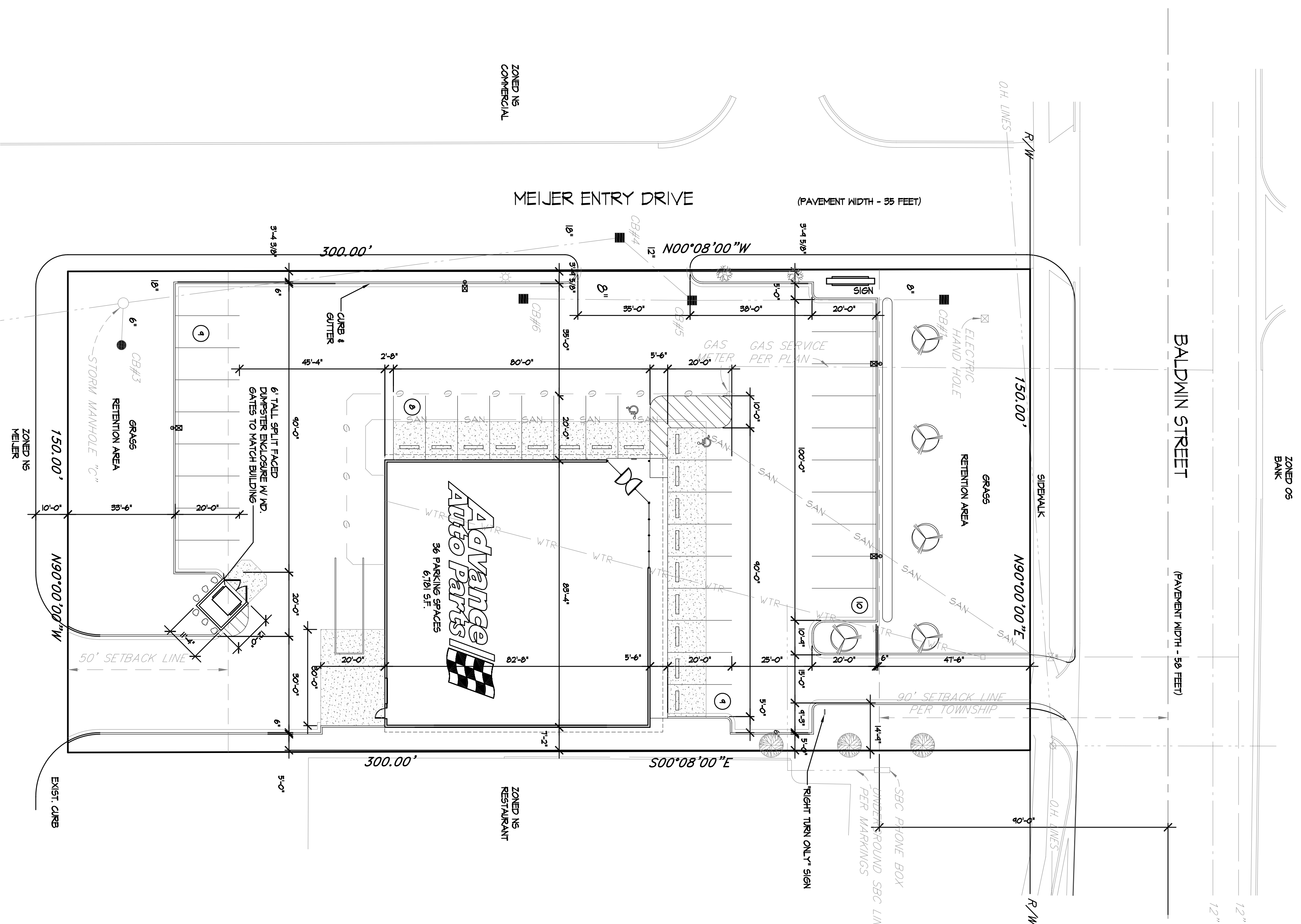
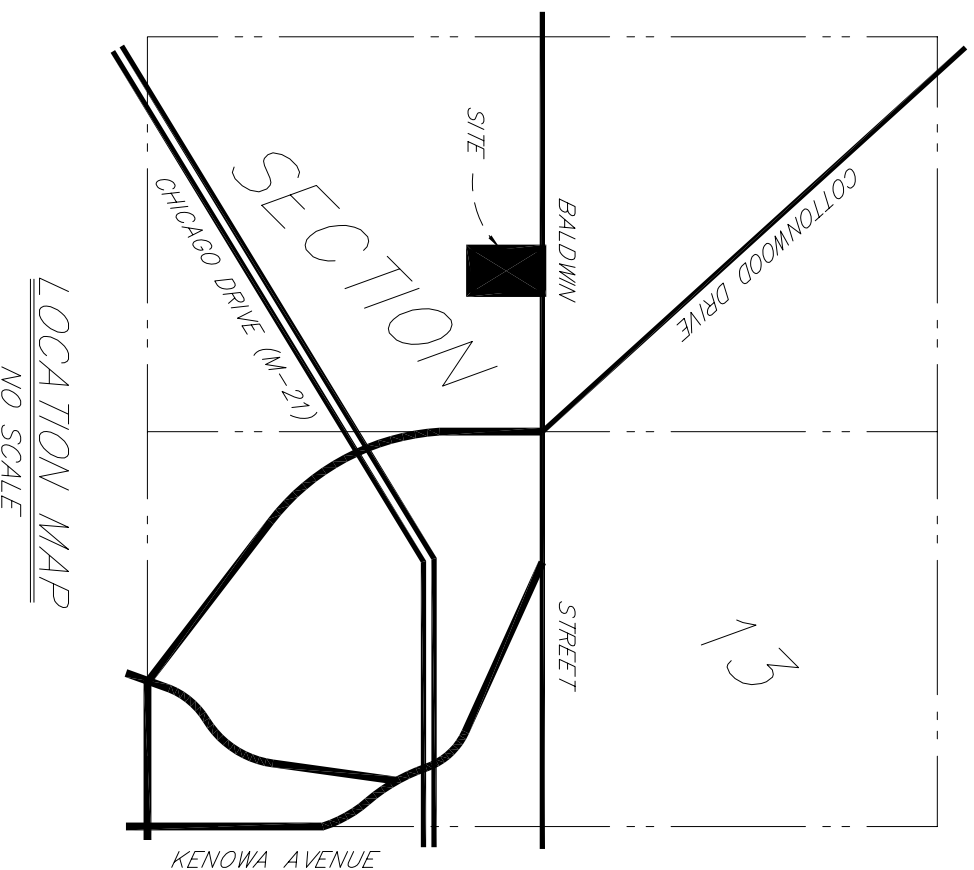
ZONING SITE PLAN

GENERAL NOTES

THIS AREA IS NOT LOCATED IN A FLOODPLAIN.
TABLE OF OFF STREET PARKING REQUIREMENTS:
RETAIL STORES - 1 SPACE FOR EACH 200 SF. OF GFA
GFA = 6,784 SF. = 6,784 / 200 = 33.92 = 34 PARKING SPACES REQUIRED
36 PARKING SPACES PROVIDED
OFF STREET LOADING REQUIREMENTS:
20,000 - 20,000 SF. GFA = ONE SPACE REQUIRED ONE SPACE PROVIDED
LOCATION, TREE SIZE OF PROPOSED LANDSCAPING
A. 1 TREE PER 25' OF FRONTAGE
FRONTAGE = 150' - 150' / 25' = 6 TREES REQUIRED
5 SHARPEST LOCUST TREES (2" CALIPER) TO BE PLANTED
10 TREES TOTAL WILL BE PROVIDED
B. A ROW OF BURNING BUSHES WILL BE PLANTED IN FRONT OF THE
DUMPSTER ENCLOSEMENT. SIX ARBORETVIVE BUSHES WILL BE PLANTED ADJACENT TO THE
DUMPSTER ENCLOSEMENT. MINIMUM FOUR FEET IN HEIGHT.

LANDSCAPE LEGEND

	ROW OF BURNING BUSHES
	NON-DECIDUOUS TREE: SHARPEST LOCUST
	EXISTING TREE: ASH
	EXISTING FRUIT TREE
	ARBORETVIVE BUSH



A SCHEMATIC SITE LAYOUT
SCALE: 1"=20'-0"



PROJECT LOCATION:
600 BALDWIN
JENISON, MI 49428
1.033 AC. - ZONED NS

Project No. AD128

File Name:

Date: 8/30/05

Revision: 9/8/05

9/14/05

Sheet Title:

EXTERIOR ELEVATIONS

